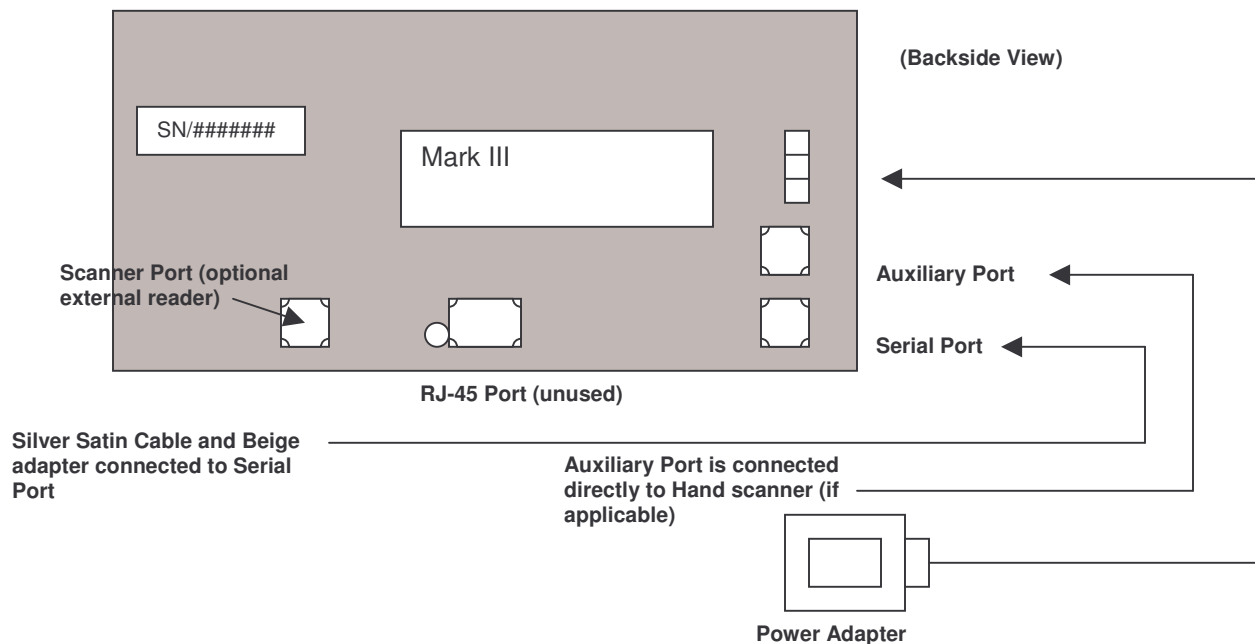


## TimeClock Plus Mark (Series) Professional / Enterprise Serial RDT Setup

This documentation should be read in its entirety before you begin using or installing your Ethernet terminal and software associated with it.

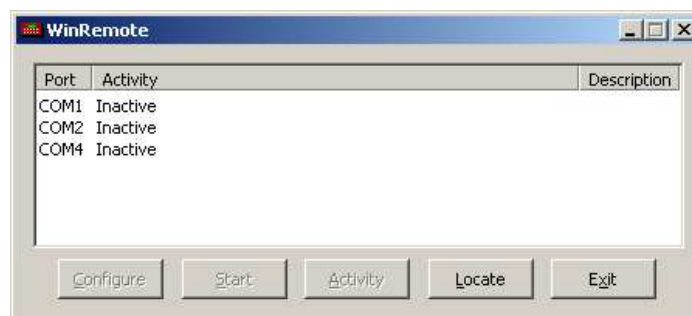
### Connecting the Serial Remote Data Terminal



1. Start by connecting the beige serial adapter into the back of your computer in either a 9 or 25 pin serial port.
2. Connect the silver satin cable to the back of the beige adapter in what appears to be a phone jack connection.
3. Plug the other end of the cable into the back of the Remote Data Terminal, serial port jack.
4. Plug the RDT power supply into an electric wall outlet.
5. Connect the 3 prong plastic plug from the power supply into the back of the RDT. At this point the green backlit area on the terminal should be lit.

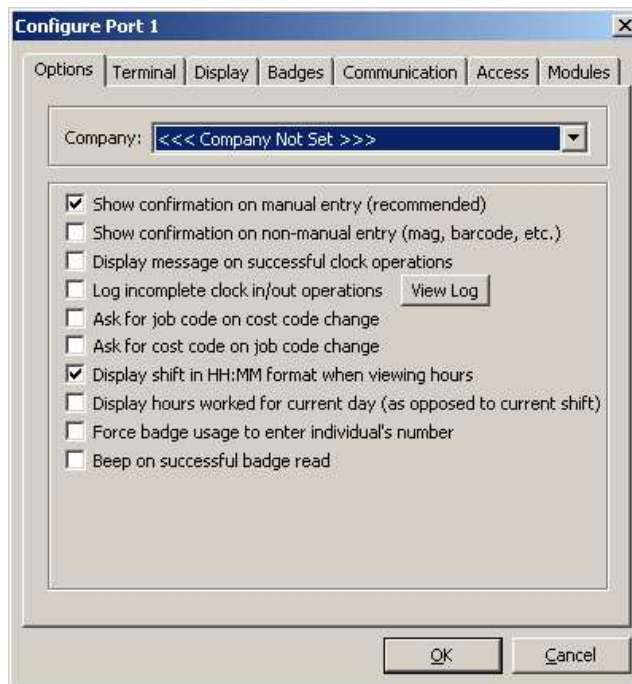
### Configuring the WinRemote Software for the Serial Terminal.

1. Launch the WinRemote software as shown below.

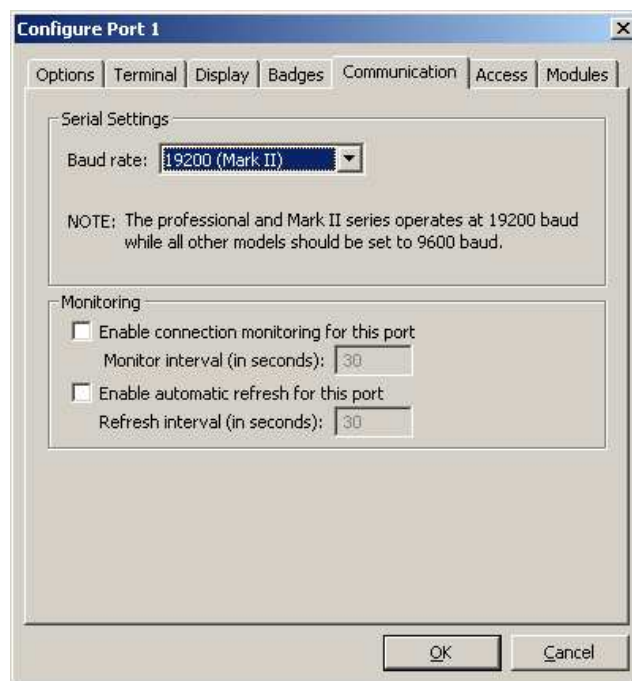


2. Select the COM port that the Remote Data Terminal is connected to.

3. Click on the Configure button. The following screen will appear.



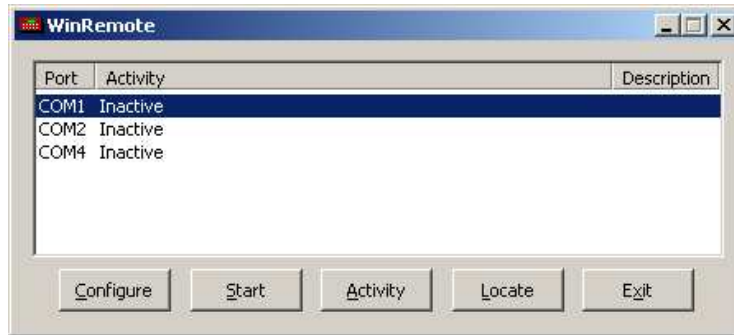
4. Click on the **Communication Tab** to configure the Baud Rate of the Serial Terminal.



5. Verify that the baud rate is on 19200 for Mark II and Mark III terminals. You may select the Auto option if you have an older unit.

6. Click on the **OK button**.

6. Select and highlight the COM port that the Remote Data Terminal is connected to.



7. Click on the **Start** button to start the Serial Terminal. The WinRemote software will display the “Idle” message next to the selected terminal instead of the “Inactive” message.

8. View the Serial Terminal. Notice that the terminal is now displaying the TimeClock Plus clocking functions.

### Frequently Asked Questions:

*Can a regular 4 wire phone cable be used instead of the TimeClock silver satin cable?*

The TimeClock silver satin cable is not the same as a regular telephone wire. Please contact TimeClock Plus technical support at 325-223-9300 if you need to make a custom wire.

*Can I plug the terminal into a modem port in the back of my computer?*

The modem ports on the back of your computer are not the same as standard serial ports. This may cause you to short out your Remote Data Terminal and may damage your modem.

### Trouble Shooting

**Error: The terminal says “Waiting for Host” after the port has been started in the WinRemote application.**

Verify that your connections between the terminal, beige adapter, and computer are all secure.

Verify that you have started the correct COM port in the WinRemote software.

Verify that the silver satin cable is plugged into the serial port and not in the Auxiliary port in the back of the Remote Data Terminal.